

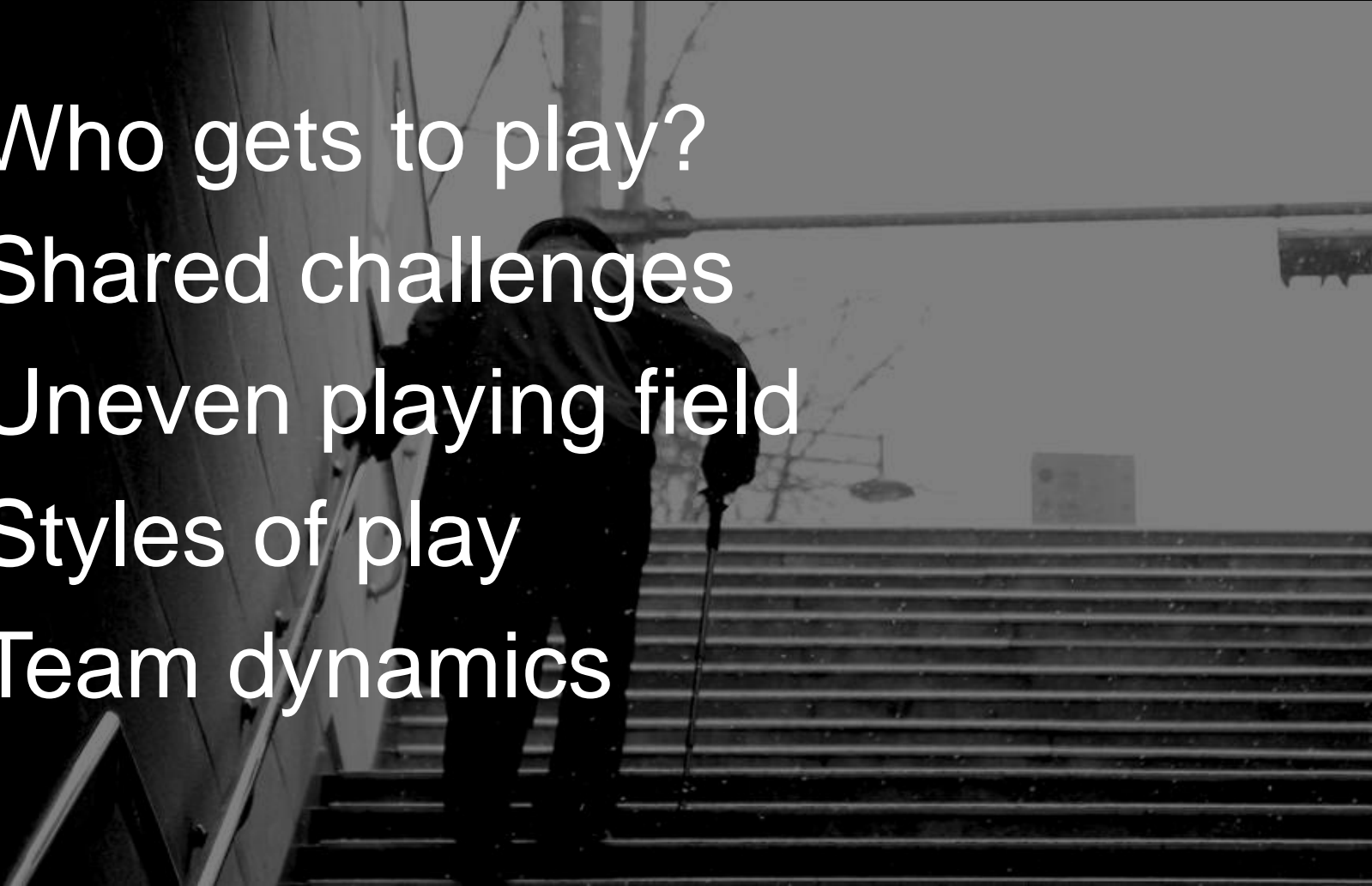


Unequal Aging: *Lessons from Inequality's End Game*

Corey M. Abramson, Ph.D.
University of Arizona

Overview: The End Game

- I. Who gets to play?
- II. Shared challenges
- III. Uneven playing field
- IV. Styles of play
- V. Team dynamics



Who Gets To Play?

- Freese and Lutfey (2011): “The lower status people are, the sooner they die, and the worse health they have while alive [on average].”
- Most disadvantaged typically do not survive to the *End Game* (selective mortality) and those that do are typically in worse health

The Uneven Playing Field

- Continuation in fundamental differences in resources *across* groups
- Individual resources (wealth, pension, insurance, home, family)
- Neighborhood resources (public transit, good hospitals, senior programs, service hubs)
- Baygardens (M.C.) versus Rockport (Poor)

Running Out of Ensure

- Pauline
Middle-Class African American woman
- Laura
Middle-Class white woman
- Dave
Poor white man

Implications

- Necessary to look at the intersection between aging and inequality
 - Need both macro and micro-data
- Health is a key axis of inequality
- Interventions remain uneven and piecemeal



Thank you!

Corey M. Abramson

Email:

coreyabramson@email.arizona.edu

Web:

<http://cmabramson.com/>