



BIPARTISAN POLICY CENTER

Urban and Milliman Modeling and LTSS Financing Policy Development

Brian Collins
Bipartisan Policy Center
January 27, 2016

bipartisanpolicy.org



- Founded in 2007 by former Senate Majority Leaders Howard Baker, Tom Daschle, Bob Dole, and George Mitchell



- For more information see: www.bipartisanpolicy.org

HEALTH PROJECT – LONG-TERM CARE INITIATIVE

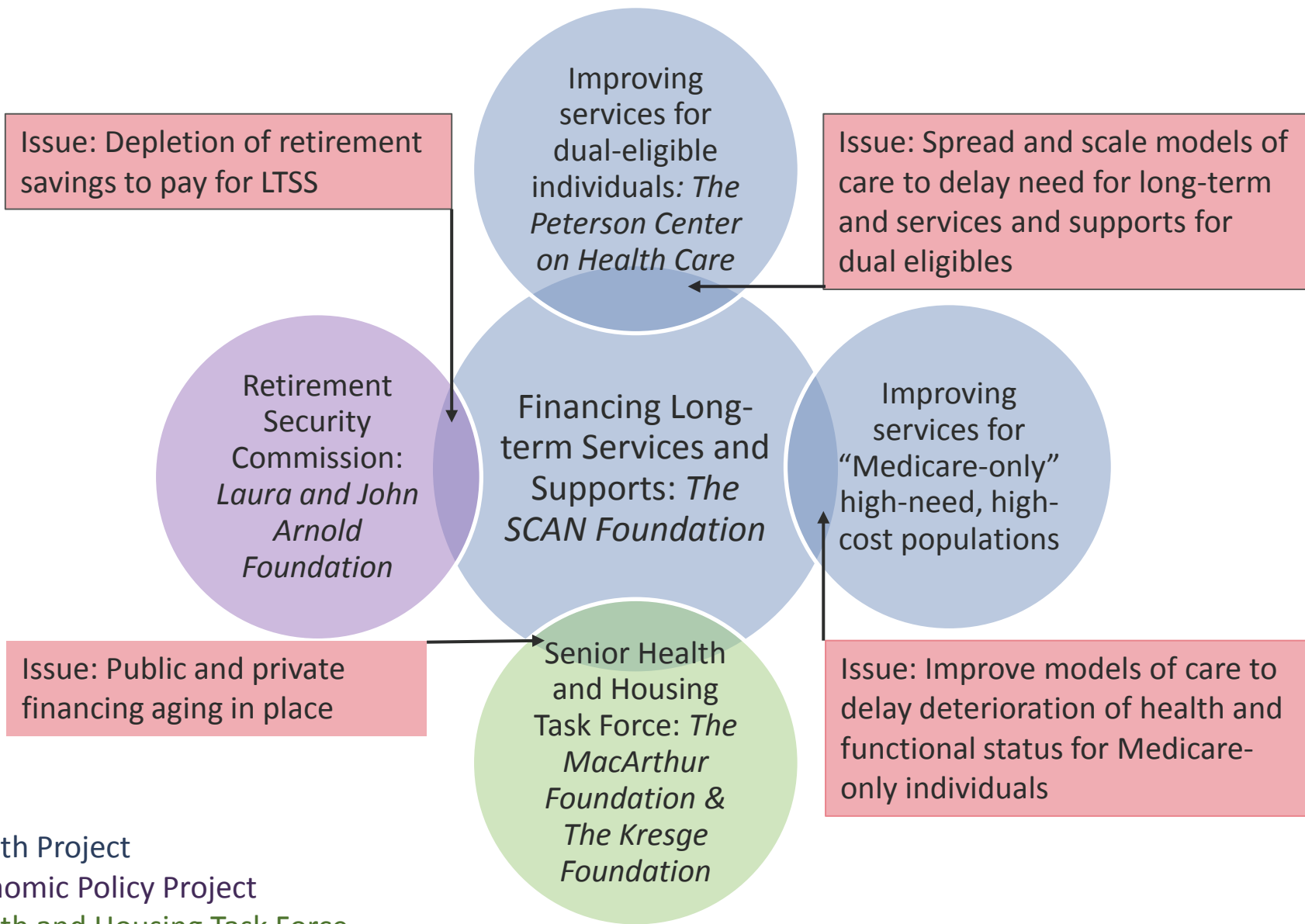


Leaders:

- Former Senator Tom Daschle (D-SD)
- Former Senator Bill Frist (R-TN)
- Former CBO Director Alice Rivlin
- Former Governor and HHS Secretary Tommy Thompson



BPC Projects to Improve Care for Older Americans



Health Project
Economic Policy Project
Health and Housing Task Force



The Backdrop: Political and Technical Challenges

- Uncertainty and Lack of Data
- Fiscal Environment
- Political Environment

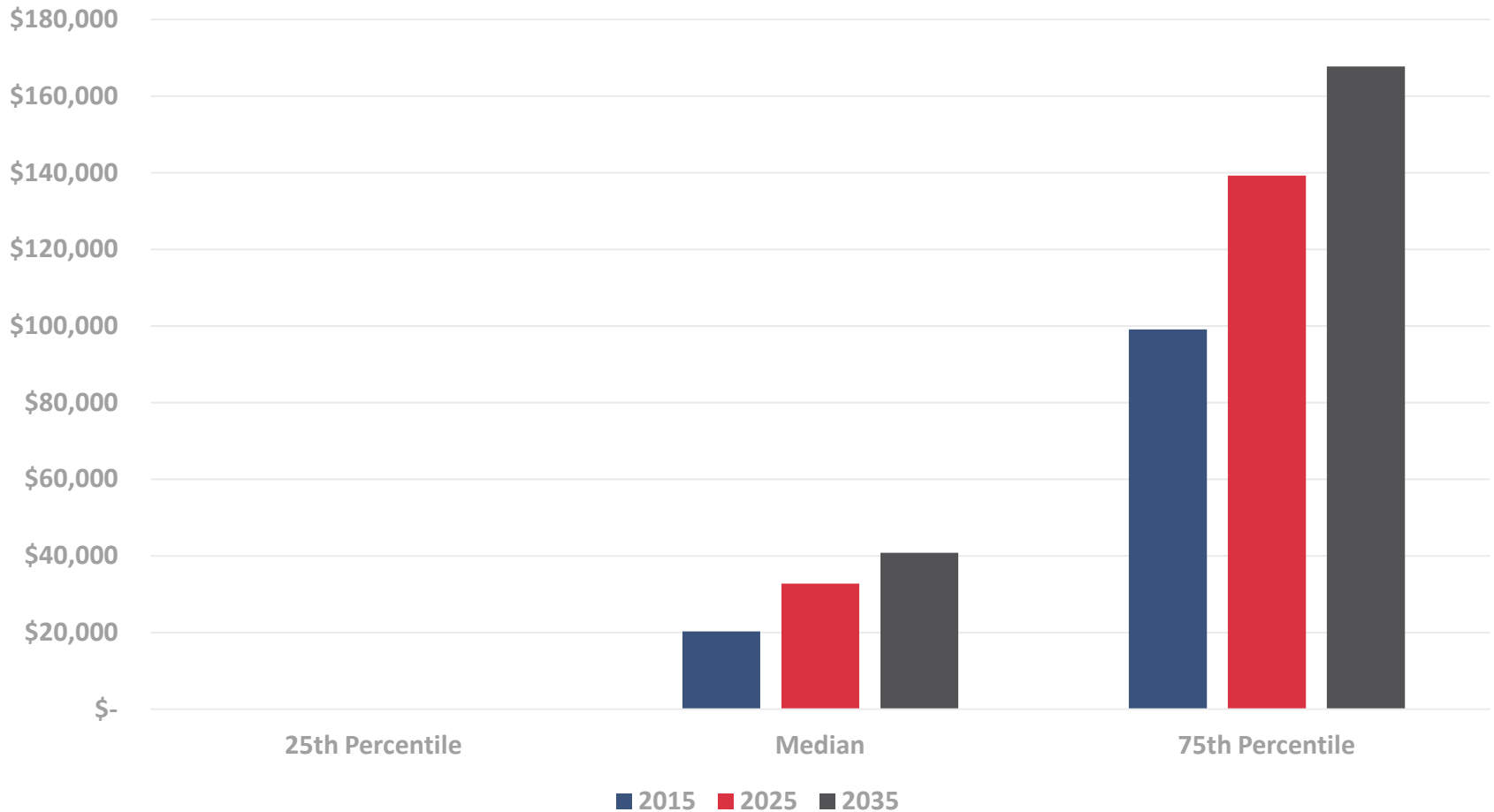
Modeling: A Learning Process

- Medicaid (Not modeled, but part of BPC work)
- Public Insurance Approaches
- Private-Market LTCI Approaches

RETIREMENT ASSETS PROJECTED TO GROW, BUT AMOUNTS ARE MODEST FOR MANY



Per Capita Retirement Assets in 2015 Dollars - Americans Age 62+



Source: DYNASIM3 – The Urban Institute