
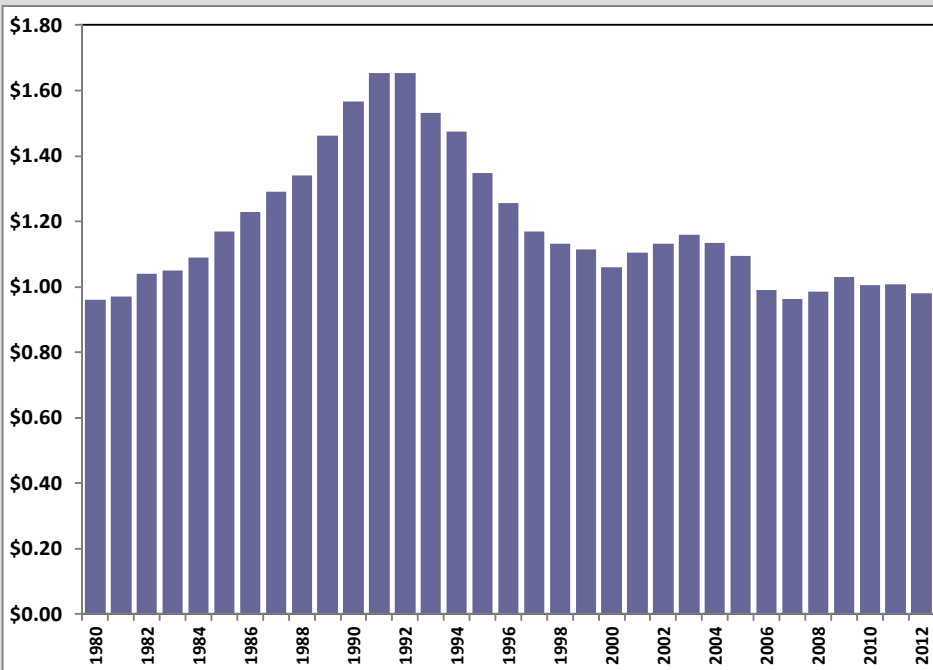


WORKERS' COMPENSATION ON THE RISE

Economic Recovery Seen in Increase

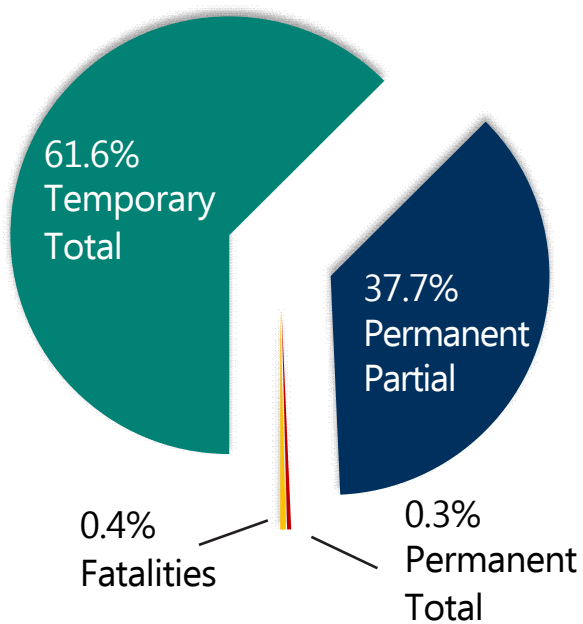
TOTAL
BENEFITS 
1.3%

128
MILLION
COVERED
WORKERS



Workers' Compensation Benefits, 1980-2012
per \$100 of covered wages

MOST DISABILITY CASES ARE TEMPORARY



 EMPLOYER COSTS
6.9% SINCE 2011



INCREASED EMPLOYER
COSTS REFLECT INCREASED
EMPLOYMENT AND WAGES

CHANGE IN TOTAL WORKERS' COMPENSATION BENEFITS PAID, 2010-2012

